

TEL:
FAX:

OFFER Nr.:
25-170421110137

U/Ref.:

1 Semi-trailer MAX100

MAX100-N-4A-9.30



MAX TRAILER DISTRIBUTION

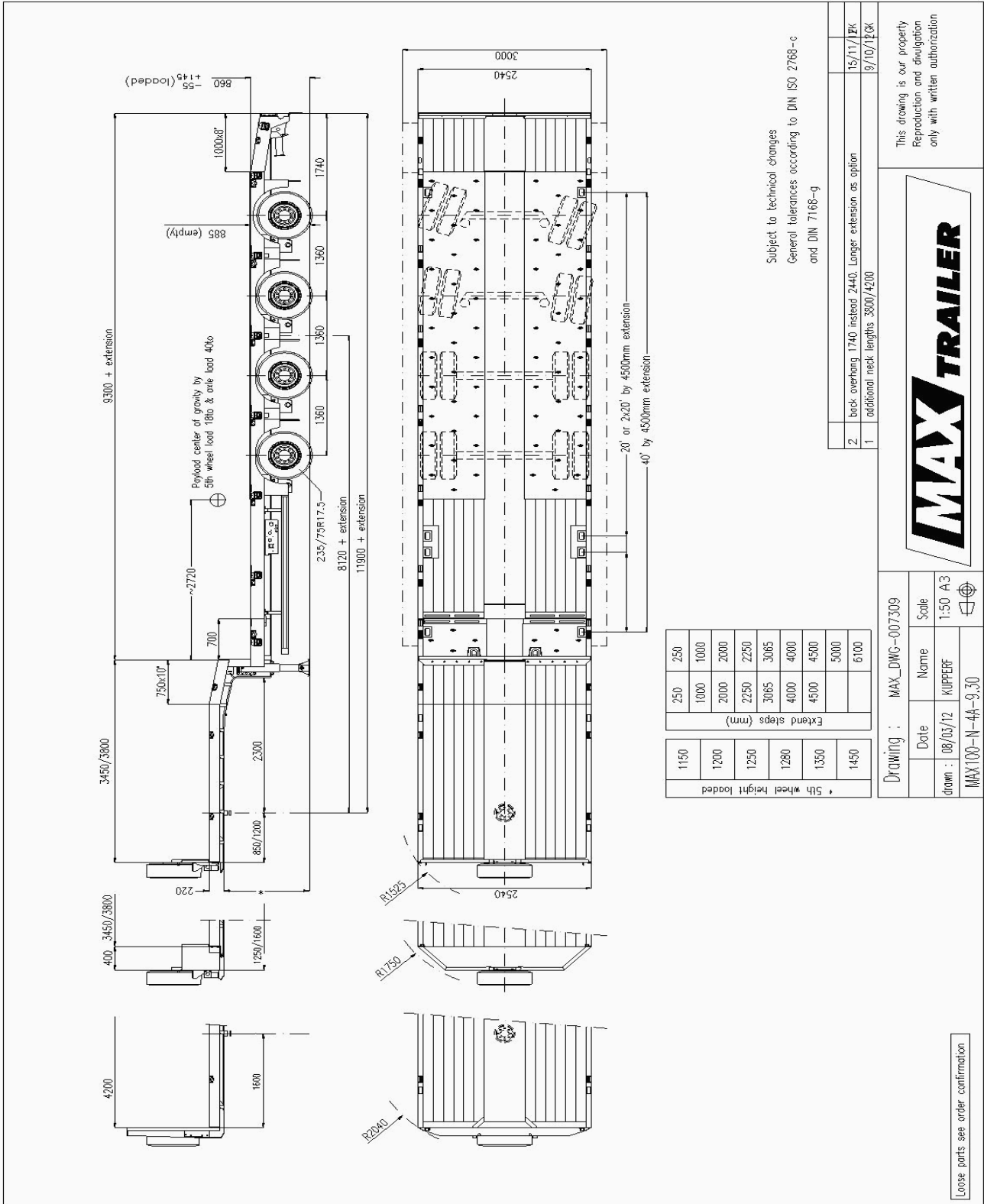
8, Duarrefstrooss
L-9990 WEISWAMPACH
maxtrailer.eu

T: +352 26 90 04 474
F: +352 26 90 04 425
info@maxtrailer.eu

Matrikelnr. 2008 2231 804
HR/RC Diekirch: B142.831
ID: LU 231 38776

(L): BGL BNP PARIBAS
IBAN LU98 0030 3501 4206 0000 BIC BGLLULL

Powered by **FAYMONVILLE GROUP**



MAX TRAILER DISTRIBUTION

8, Duarrefstrooss
 L-9990 WEISWAMPACH
maxtrailer.eu

T: +352 26 90 04 474
 F: +352 26 90 04 425
info@maxtrailer.eu

Matrikelnr. 2008 2231 804
 HR/RC Diekirch: B142.831
 ID: LU 231 38776

(L): BGL BNP PARIBAS
 IBAN LU98 0030 3501 4206 0000 BIC BGLULL

Technical data

MAX100-N-4A-9.30

Speed:	80 km/h
Gross weight:	60 800 kg
King pin load:	18 000 kg
Axle load:	42 800 kg
Tare weight (+/- 3%):	10 466 kg
Pay load ca.:	50 334 kg
()	
Gooseneck length:	3450 mm
Fifth wheel height loaded:	1250 mm
Loading length:	9300 mm
Extendable of:	4500 mm
Axle distance:	1360 mm
Rear gooseneck swing:	2300 mm
Loading height by max. load:	860 mm
Width:	2540 mm
Suspension:	-55/ +145 mm

Technical description**Gooseneck:**

Gooseneck with rear chamfered by ca. 750 mm x 10°.
3 pairs of lashing rings (LC 5 000 daN).
Hardwood covered thickness 30 mm.

Loading platform in extendable version:

Loading platform in extendable version with chamfered beaver tail by about ca. 1 000 mm x 8°.
5 pairs of droprings in the loadplatform, hinged outward (LC 5 000 daN).
3 pairs of droprings in the loadplatform, hinged outward (LC 10 000 daN).
1 pair of droprings in front in the firm part the loading platform (LC 10 000 daN).
Hardwood covered thickness 48 mm above the axles chequer plate.

Steel construction:

Steel construction of high tensile steel.
Steel grade:
**S355J2+N/S355MC (yield strength 355MPa)
**S690QL/S700MC (yield strength 690MPa)

Electric system

Electric system conform to the EU-regulations lighting LED 24 volt ASPÖCK-NORDIK (ASS3).
ASPÖCK-UNIBOX on the galvanised front connection ledge with socket 24N, 24S & 15 pole.

MAX TRAILER DISTRIBUTION

8, Duarrefstrooss
L-9990 WEISWAMPACH
maxtrailer.eu

T: +352 26 90 04 474
F: +352 26 90 04 425
info@maxtrailer.eu

Matrikelnr. 2008 2231 804
HR/RC Diekirch: B142.831
ID: LU 231 38776

(L): BGL BNP PARIBAS
IBAN LU98 0030 3501 4206 0000 BIC BGLLLL

Connection to the ISO norm.
24N ISO-1185
24S ISO-3731
15 pol. ISO-12098

Tire: Tire 235/75 R17.5 according to choice of the manufacturer.

Braking system: Braking system WABCO following EU-regulations with EBS-E (4S3M) system, without connection to the truck.

Finishing: Top quality and long-lived protection against corrosion of the welded frame (standard steel grid blasted) guaranteed by
-a 2 components of 2K zinc rich epoxy primer
-a high quality 2 components 2K direct to metal top coat.

Landing gears: Landing gears JOST (mechanic) with 2 speeds, lifting capacity 24t (50t proof load).

Included options

- One galvanised steel headboard, height \pm 400 mm.
- King pin 2"
- 2 wheel chocks with carrier on the headboard.
- Holder for one beacon light at the rear of the trailer.
- SAF axles two axles fix, two axles friction steered, with drum brake, pneumatic suspension with lifting/lowering valve.
The friction steered axles with and electropneumatic locking device for reverse drive activated by reverse or manual.
Axle tools.
- Preparation at the rear of the gooseneck for Alu-ramps.
- Galvanised landing gears at the rear under the loading platform.
- One spare wheel with holder on the headboard.
- **Galvanised outriggers, extendable up to ca. 230 mm per side. (\pm 262kg)**
- Yellow reflective tape according to the EU regulation over the entire length, on the extension and at the rear.
- Red and yellow air couplings on the galvanised front connection ledge.
- On the right and left under the gooseneck and at the rear of the trailer one holder for the warning boards and socket.
- A mud flap (www.MAX-Trailer.eu) at the rear of the trailer.
- Manual and description

MAX TRAILER DISTRIBUTION

8, Duarrefstrooss
L-9990 WEISWAMPACH
maxtrailer.eu

T: +352 26 90 04 474
F: +352 26 90 04 425
info@maxtrailer.eu

Matrikelnr. 2008 2231 804
HR/RC Diekirch: B142.831
ID: LU 231 38776

(L): BGL BNP PARIBAS
IBAN LU98 0030 3501 4206 0000 BIC BGLLLULL

Powered by  **FAYMONVILLE GROUP**

- On the gooseneck removable sideboards and rearboard in alu ca. 2 400 x 400 mm (L x H).
The galvanised rear stakes are dismountable.
(Length of the structure ca. 2 560 mm). (± 46kg)
- 4 pairs of WADER containerpockets in the loading platform for one 20', 2 x 20' or 40' container. (± 40kg)
- 7 pairs of pockets for stakes ca. 100 x 50 mm in the outer frame of the loading platform. (± 21kg)
- 1st axle as liftaxle (depending on the load) lifting with air bag. (± 69kg)
- Profile displaceable as hook-on device for alu-ramps at the rear.
- Reflectors (red or yellow) according to the EU regulation at the rear of the trailer.

Colors

Trailer	RAL 3002 Karminrot
Rims	silvergrey

for the price of:

53 000,- EUR

Delivery date:

Conditions of payment:

Validity:

Warranty: 1 year

MAX TRAILER DISTRIBUTION

8, Duarrefstrooss
L-9990 WEISWAMPACH
maxtrailer.eu

T: +352 26 90 04 474
F: +352 26 90 04 425
info@maxtrailer.eu

Matrikelnr. 2008 2231 804
HR/RC Diekirch: B142.831
ID: LU 231 38776

(L): BGL BNP PARIBAS
IBAN LU98 0030 3501 4206 0000 BIC BGLULLLL

Powered by 